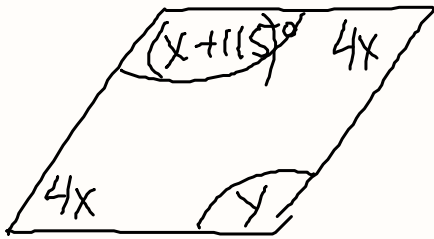


#13



$$y = x + 115$$

$$2 \cdot 4x + 2(x + 115) = 360$$

$$\underline{8x + 2x + 230 = 360}$$

$$10x + 230 = 360$$

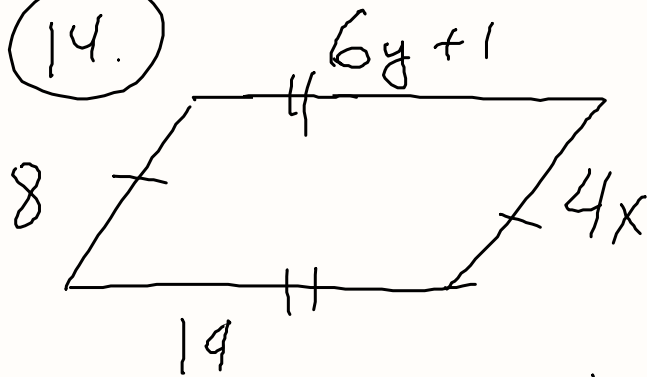
$$\quad - 230 \quad - 230$$

$$10x = 130$$

$$x = 13$$

$$y = 13 + 115 = 128^\circ$$

(14.)



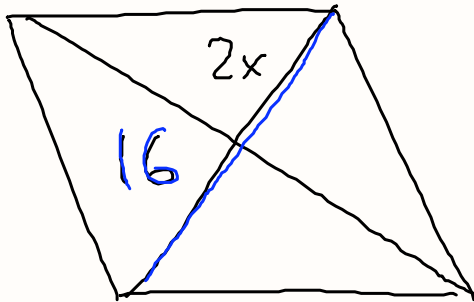
$$4x = 8$$

$$x = 2$$

$$6y + 1 = 14$$

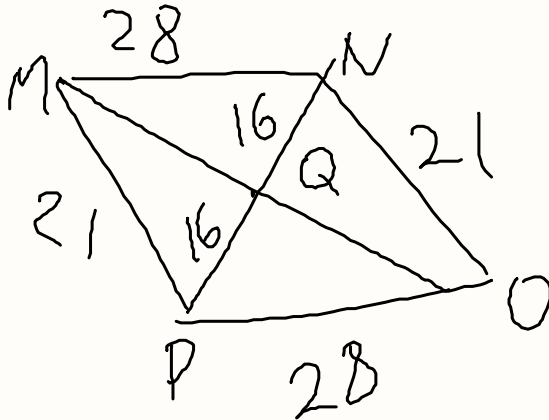
$$6y = 13 \quad y = \frac{13}{6}$$

15



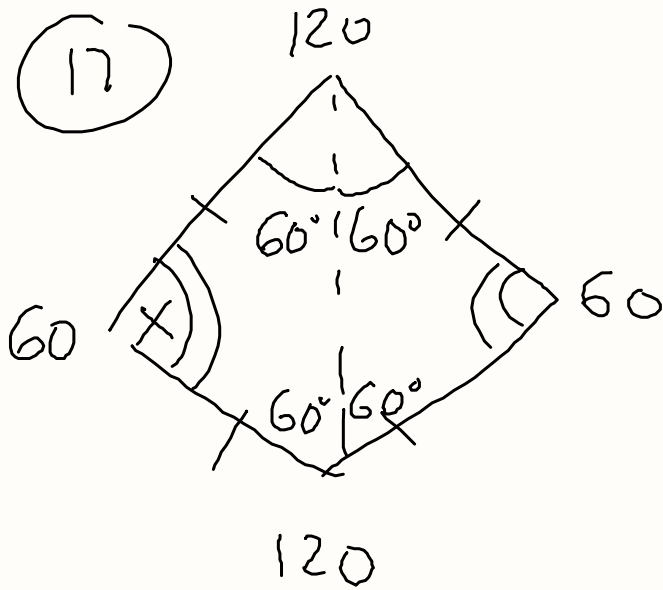
$$2x = 8$$
$$x = 4$$

16



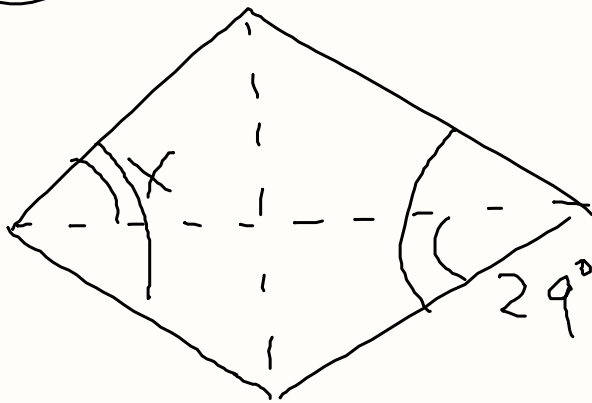
Perimeter $\triangle NMP =$
 $= 21 + 28 + 16 =$
 $+ 16 = 81$

(17)



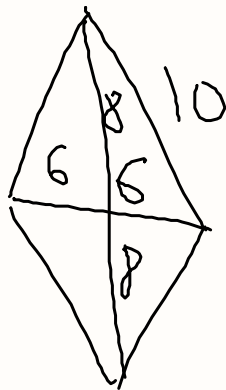
$$X = 60^\circ$$

18



$$X = 29^0$$

19

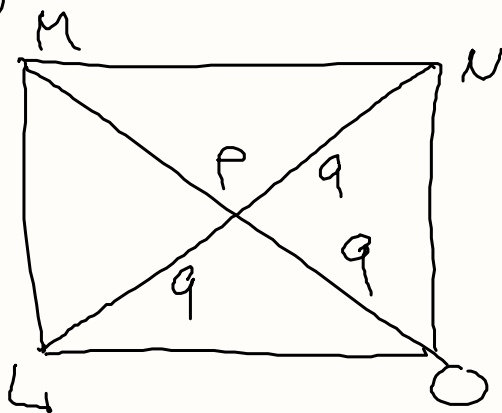


$$P_{\text{RHOMBUS}} \approx 4.10 = 40$$

$$8 + 8 + 6 + 6 = 28$$

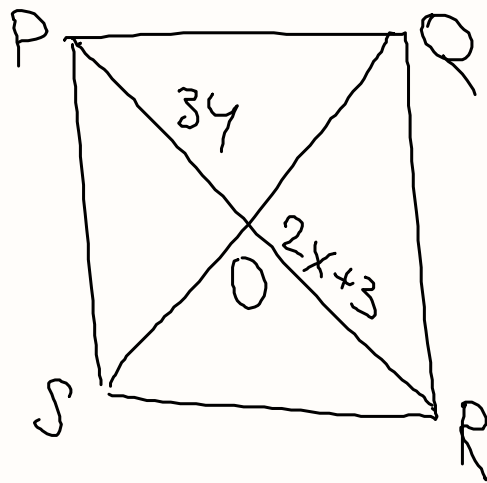
TOTAL: $28 + 40 = 68$

(20)



$$\angle N = 2 \cdot 9 = 18$$

(21)



$$PR = 34$$

$$OR = \frac{34}{2} = 17$$

$$2x + 3 = 17$$

$$\begin{array}{r} 2x + 3 = 17 \\ -3 \quad -3 \\ \hline 2x = 14 \end{array}$$

$$x = 7$$